

## Like to join us?

If you are not sure about joining, we are always pleased to welcome visitors to our meetings. So why not come along and get to know us first?

## Keeping in touch

Members receive programmes of Field Meetings and Winter Talks, two Newsletters a year and an Annual Report summarising the activities of the past year. At Winter Talk meetings members are encouraged to describe any particularly interesting wildlife events they have seen.



## Haslemere Natural History Society

Otherwise just fill in the form on the other side of this sheet and send it with your subscription to:

Haslemere Natural History Society  
Haslemere Educational Museum  
High Street  
Haslemere GU27 2LA

Our annual subscription is £12 single, £18 joint or family.

Membership is renewable in January each year (but newcomers joining after September are not required to renew until the following year-end.)

The Society's website is updated frequently with local sightings, HNHS news, and links to other useful websites. It also has a fine selection of photographs and a Stop Press page. If you have interesting or unusual sightings please do e-mail us.

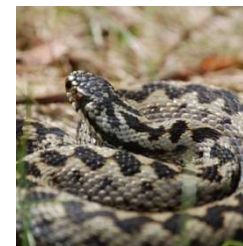
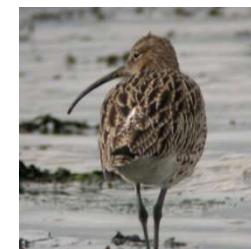
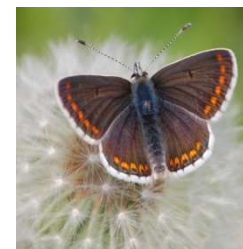
Our Annual General Meeting gives members the opportunity to contribute to the workings of the Society.

Haslemere Natural History Society  
c/o Haslemere Educational Museum  
High Street  
Haslemere GU27 2LA

[www.haslemerenaturalhistorysociety.org.uk](http://www.haslemerenaturalhistorysociety.org.uk)

E-mail: [info@haslemerenaturalhistorysociety.org.uk](mailto:info@haslemerenaturalhistorysociety.org.uk)

*Join us, and be  
amazed by what's on  
your doorstep*



## Why this area?

We are fortunate to live in one of the most beautiful parts of England. The surrounding woodland, heaths and meadows are home to an exceptional number of wild creatures and plants. Much of this goes unseen as we pursue our daily lives, but the wonderful variety of life around us can be appreciated by knowing where to look, and when.

## Who are we?

The Haslemere Natural History Society (HNHS) helps local people see and learn about our wildlife heritage by organising field trips and winter talks led by friendly specialists. The Society's enthusiasms are broadly based, which ensures a wide range of interests are covered each year.

Whether it's birds, mammals, wild flowers or insect life that interests you, or you just love the surrounding countryside, we're sure to have something for you.

## What do we do?

### Field meetings

We organise a series of field meetings throughout the year. Our bird watching events are always popular, particularly in winter when little other wildlife is to be seen.

Spring usually brings the first of our wild flower walks, which continue until autumn when we have a very popular Fungus Foray.

Summer is ideal for seeing many species which do not appear in the colder months.

Bat watching evenings and butterfly walks are popular and visits to local Nature Reserves appeal to a range of tastes.

Small mammals, lizards, dragonflies, and a wealth of other creatures and plants may be seen on these walks, and specialist members can usually help with identification.

### Winter Talks

Several winter talks are organised by the Society each year. They are held jointly with Haslemere Educational Museum in the Museum's Lecture Room on Saturday afternoons.

Expert speakers are invited to provide lively and colourfully illustrated talks on wildlife or environmental themes.

-----

For annual subscription payable to Haslemere Natural History Society (due on 2 January each year) we prefer payment by cheque, standing order or bank transfer to our Account at Lloyds Bank plc, Haslemere Branch, . Sort code: 30-93-94 Account No: 00070189.

**I would like to join  
the Haslemere Natural History Society**

Registered as a charity - No. 279981

Name: \_\_\_\_\_

Address: \_\_\_\_\_  
\_\_\_\_\_

Postcode \_\_\_\_\_

\*Tel: \_\_\_\_\_

\*E-mail: \_\_\_\_\_

\* This information is optional.

By providing us with this email address you consent to us using it for Society communications to you in accordance with our GDPR policy. For our full Privacy Notice please see our website or ask the Society Secretary for a hard copy.

Please indicate if you would prefer to receive **electronic** or **printed [E or P]** copies of programmes of Field Meetings and Winter Talks [  ], the Newsletters [  ] and/or Annual Report [  ].

I enclose my subscription for the following membership (please tick as appropriate):

[  ] £12 single

[  ] £18 joint (one copy of mailings)

[  ] £18 family (one copy of mailings)

How did you hear about us? (e.g.friend/flyer/press)  
\_\_\_\_\_

Signed: \_\_\_\_\_

Date: \_\_\_\_\_

Your details will be held on computer solely for administrative use by the Society.